

# Kumamoto Horn Ensemble Series

## The Sorcerer's Apprentice

for 8 Horns

Composed by Paul DUKAS  
Arranged by Takeshi TAKAHASHI

Aaaaz lent (♩ = 40)

1

2

Vif (♩ = 128)

3

Vif (♩ = 128)

4

5

6 Vif (♩ = 112) 7

6

8

9

Horn in F 2

The Sorcerer's Apprentice

9

Musical staff 9, measures 107-114. The staff begins with a treble clef and a key signature of two flats. It contains a sequence of notes with rests, including a 7-measure rest and a 5-measure rest. The dynamic marking *p* is placed below the staff.

10

Musical staff 10, measures 126-132. The staff contains a sequence of notes with rests, including a 5-measure rest. Dynamic markings *p* and *mf* are placed below the staff.

11

Musical staff 11, measures 139-145. The staff contains a sequence of notes with rests, including a 2-measure rest and a 3-measure rest. Dynamic markings *p* and *mf* are placed below the staff.

12

Musical staff 12, measures 150-157. The staff contains a sequence of notes with rests. A dynamic marking *f* is placed below the staff.

13

14

Musical staff 13-14, measures 158-165. The staff contains a sequence of notes with rests, including a 2-measure rest and a 9-measure rest. Dynamic markings *f* are placed below the staff.

15

Musical staff 15, measures 175-182. The staff contains a sequence of notes with rests. Dynamic markings *p* are placed below the staff.

16

Musical staff 16, measures 183-190. The staff contains a sequence of notes with rests. A dynamic marking *p* is placed below the staff.

17

Musical staff 17, measures 191-198. The staff contains a sequence of notes with rests. A dynamic marking *f* is placed below the staff.

18

Musical staff 18, measures 199-206. The staff contains a sequence of notes with rests, including an 11-measure rest. Dynamic markings *p* and *f* are placed below the staff.

19

Musical staff 19, measures 218-225. The staff contains a sequence of notes with rests. A dynamic marking *f* is placed below the staff.

Horn in F 2

The Sorcerer's Apprentice

20 poco animando (♩ = 116)

Musical notation for measure 227, starting with a forte (*f*) dynamic. The key signature has two flats (B-flat and E-flat), and the time signature is 3/4. The notation shows a sequence of eighth and sixteenth notes with rests.

21 piu animando (♩ = 120)

Musical notation for measures 235-243, including a fortissimo (*ff*) dynamic and a fermata. The notation features a series of eighth notes and a fermata over a final note.

22 Au mouv (♩ = 112)

Musical notation for measures 244-251, including a fortissimo (*ff*) dynamic. The notation shows a melodic line with a fermata over a final note.

Musical notation for measures 252-260, consisting of a steady eighth-note pattern. The key signature has two flats (B-flat and E-flat).

23

Musical notation for measures 261-268, including a forte (*f*) dynamic. The notation shows a sequence of eighth notes with rests.

24

Musical notation for measures 269-277, including a forte (*f*) dynamic and trills (*tr*). The notation features a series of eighth notes and trills.

Musical notation for measures 278-285, including a forte (*f*) dynamic. The notation shows a sequence of eighth notes with rests.

25

Musical notation for measures 286-293, including a forte (*f*) dynamic and a fortissimo (*ff*) dynamic. The notation shows a sequence of eighth notes with rests.

Musical notation for measures 294-315, including a mezzo-piano (*mp*) dynamic. The notation shows a sequence of eighth notes with rests.

26

Musical notation for measures 316-323, including a mezzo-piano (*mp*) dynamic. The notation shows a sequence of eighth notes with rests.

Horn in F 2

The Sorcerer's Apprentice

325 *mf*

27

336 *f* *mf*

28

347 *accel.* *f*

29

358 *a tempo*

30

367 *f*

31

376 *f*

32

392 *p* *f*

33

402 *p* *f*

34

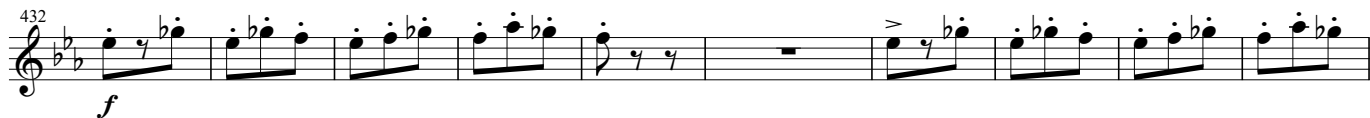
410 *p*

35

423 *f*

36

32



33



34



35

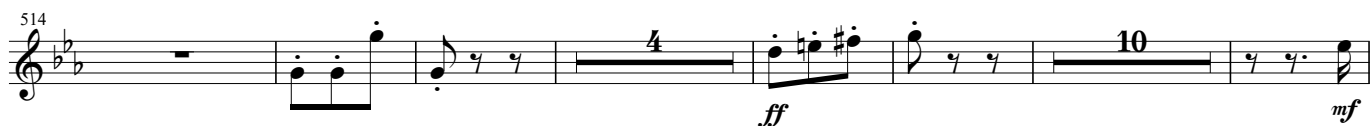


37

36 Serrez un peu le mouvt. (♩ = 116)



38 Plus anime (♩ = 120)



39



567

Musical staff with notes and rests, including accents and slurs.

Toujours plus anime (♩. = 120)

578

*mp* *f* *f* *f*

Musical staff with notes and rests, including dynamics and slurs.

589

*f*

Musical staff with notes and rests, including dynamics and slurs.

41

Tres vif (♩. = 124)

599

*ff*

Musical staff with notes and rests, including dynamics and slurs.

Retenu (♩. = 80)

610

*ff* *ff* *ff*

Musical staff with notes and rests, including dynamics and slurs.

42 Plus retenu (♩. = 60)

628

*p*

Musical staff with notes and rests, including dynamics and slurs.

641

*p*

Musical staff with notes and rests, including dynamics and slurs.

44

43 A tempo (♩. = 112)

651

*p*

Musical staff with notes and rests, including dynamics and slurs.

684

Musical staff with notes and rests, including slurs.

45

692

*mf* *mf*

Musical staff with notes and rests, including dynamics and slurs.

704

*f*

Musical staff with notes and rests, including dynamics and slurs.

46

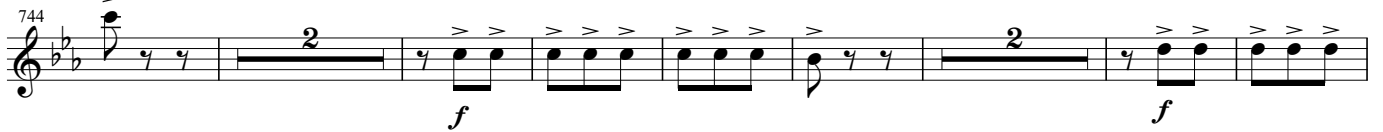
714  *f*

724  *f*

47

735  *f*

En animant un peu (♩ = 116)

744  *f*

48

755  *f*

Toujours plus anime (♩ = 120)

764  *ff*

49

773  *ff*

Tres legerement retenu (♩ = 100)

A tempo (♩ = 120)

783  *f*

792  *f*

50

801  *f*

812 

821

829

51

*f*

52 Sans presser (♩ = 128)

838

*ff* *f*

854

*ff* *f*

53 En serrant (♩ = 136)

867

*ff*

Plus anime (♩ = 140)

En animant toujours (♩ = 144)

879

54

*f* *ff*

903

55

*ff* *ff*

914

*ff*

Assez lent (♩ = 40)

56

924

*ff* *p*

931

*p* *p*

*rit.*

Vif (♩ = 112)

935

*p* *ff*